



MUSEUMDISTRICT.ORG

# The COLUMNS

MAY - JULY 2023

A PUBLICATION of THE MUSEUM DISTRICT ASSOCIATION



in

# FULL BLOOM



27th Annual

MOTHER'S DAY HOUSE & GARDEN TOUR

PAGE 12 ▶

# ARCHITECTURAL ILLUSTRATIONS



*by Harvey Bilisoly*

Call for appointments – 757-348-0729

Online portfolio available on Facebook



Rob Wright is Cabinetry & Construction. He's on every job. He's the designer/builder, owner/worker, dreamer/pragmatist. Rob envisions improvements and makes them happen, always careful to honor the spirit of the original architect. So whether he's enlarging a small closet or renovating an entire kitchen, you know the change is in harmony with the home.

Rob has numerous credentials and awards, all earned through long experience. He is a Class A licensed design/build contractor, a Certified Green Professional, an accredited HVAC system installer, and a Certified Aging-in-Place Specialist. Yet there is no board of accreditation to validate his most significant skill—creativity. Hundreds of proud homeowners do that for him.

**Cabinetry &  
Construction**

INCORPORATED

*Rob*  
We bring ~~new~~ life to old homes.



*The mission of the Museum District Association is to unite, protect and advance the interests of the neighborhood in order to realize its potential and improve the quality of life in the neighborhood and community.*

## BOARD OF DIRECTORS

President . . . . .	JANINE DOYLE
	<a href="mailto:MDApresident@museumdistrict.org">MDApresident@museumdistrict.org</a>
Treasurer . . . . .	KAREN REDFORD
	<a href="mailto:MDAtreasurer@museumdistrict.org">MDAtreasurer@museumdistrict.org</a>
Secretary . . . . .	SARAH BUSCH
	<a href="mailto:MDAsecretary@museumdistrict.org">MDAsecretary@museumdistrict.org</a>
Capital Projects . . . . .	JUSTIN LITTERST
	<a href="mailto:MDAcapitalprojects@museumdistrict.org">MDAcapitalprojects@museumdistrict.org</a>
City Liaison . . . . .	ALLISON SCHUTZER
	<a href="mailto:cityliaison@museumdistrict.org">cityliaison@museumdistrict.org</a>
<i>The Columns</i> . . . . .	BEN HOPKINS
	<a href="mailto:thecolumns@museumdistrict.org">thecolumns@museumdistrict.org</a>
Communications . . . . .	BETH BOSTIAN
	<a href="mailto:MDAcommunications@museumdistrict.org">MDAcommunications@museumdistrict.org</a>
Environment/ Code Enforcement . . . . .	EMILY SANFRATELLA
	<a href="mailto:MDAenvironment@museumdistrict.org">MDAenvironment@museumdistrict.org</a>
House Tour . . . . .	KAREN LEBO
	<a href="mailto:MDAhousetour@museumdistrict.org">MDAhousetour@museumdistrict.org</a>
Membership . . . . .	ROBIN GORDON
	<a href="mailto:MDAmembership@museumdistrict.org">MDAmembership@museumdistrict.org</a>
Museum District Woman's Club Liaison . . . . .	BETH SHUMAKER
	<a href="mailto:MDAwcliaison@museumdistrict.org">MDAwcliaison@museumdistrict.org</a>
Programs . . . . .	VACANT
	<a href="mailto:MDAprograms@museumdistrict.org">MDAprograms@museumdistrict.org</a>
Public Safety . . . . .	HENRY FROST
	<a href="mailto:MDAsafety@museumdistrict.org">MDAsafety@museumdistrict.org</a>
School Liaison . . . . .	VACANT
	<a href="mailto:MDAschools@museumdistrict.org">MDAschools@museumdistrict.org</a>
Technology . . . . .	JON CICCONE
	<a href="mailto:MDAtechnology@museumdistrict.org">MDAtechnology@museumdistrict.org</a>
Zoning . . . . .	KAREN HEADLEY
	<a href="mailto:MDAzoning@museumdistrict.org">MDAzoning@museumdistrict.org</a>

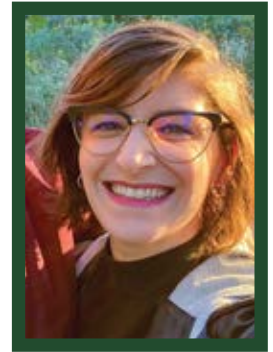
To reach any of our board members by phone, please call 804-410-1632 and leave a message stating the person you wish to reach.

The board typically meets at 7 p.m. on the third Monday of most months. If you would like to make a presentation to the board, please email or call the president.



## PRESIDENT'S COLUMN

# HAPPY SPRING, NEIGHBORS!



**JANINE DOYLE**  
2023 MDA PRESIDENT


**A**fter some classic RVA false starts, spring is hopefully here to stay. It's always an exciting season for the MDA as we approach our Mother's Day House & Garden Tour. This year's tour is jam packed with nine (!) beautiful homes, all of which you can read about in this issue of *The Columns*. You won't want to miss it!

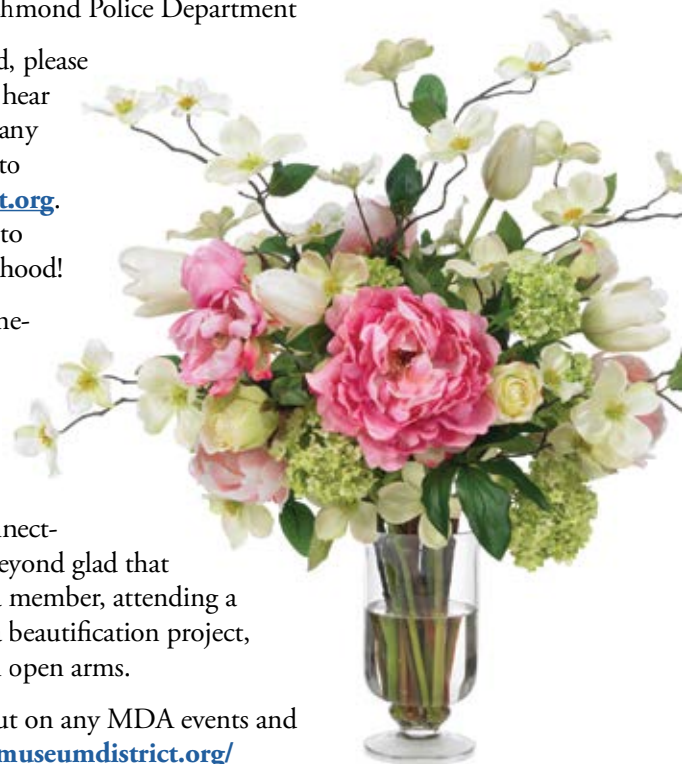
Looking back for a moment, I hope many of you were able to join us for our Town Hall in March. This annual event allows the MDA board to better understand what is important to you, Museum District residents and business owners, by providing a forum to learn more, ask questions and provide input. We're grateful for everyone's feedback and to the folks who gave their time to speak at the event:

- Alex Nyerges, Director and CEO, Virginia Museum of Fine Arts
- Kevin Vonck, RVA Director of Planning & Development Review
- Andreas Addison, First District Councilmember
- Karen Headley, MDA Zoning & Land Use Chair
- Sergeant Jonathan Davis, Richmond Police Department

Even if you weren't able to attend, please know that I am always happy to hear from residents. Feel free to send any concerns, feedback or questions to [mdapresident@museumdistrict.org](mailto:mdapresident@museumdistrict.org). I'm eager to do everything I can to support our wonderful neighborhood!

I also encourage all of you—homeowners, renters and business owners alike—to get involved with the MDA. I joined shortly after moving into the neighborhood in 2019 as a way to get to know my neighbors and feel connected to our community, and I'm beyond glad that I did. So whether it's joining as a member, attending a social event or volunteering for a beautification project, we'll certainly welcome you with open arms.

And make sure you don't miss out on any MDA events and opportunities by going to [www.museumdistrict.org/](http://www.museumdistrict.org/) [subscribe](#) and signing up for our email list. 



ABOUT THE COVER: *Kitchen of Cliff Barcliff Melanie Nan's home at 3330 Hanover Ave.*  
Photo by Rich Barrett

# APOLLO

WHEN WE WENT TO THE MOON

March 18 to December 31

**VIRGINIA MUSEUM OF  
HISTORY & CULTURE**

428 N Arthur Ashe Boulevard  
Richmond, Virginia 23220  
[VirginiaHistory.org](http://VirginiaHistory.org)

Presented by  **BOEING**

## **CUTSHAW** **AUTOMOTIVE**® *Convenient Automotive Services*

**OIL CHANGE**

**\$10 Off**

(valid 30 days, does not  
include taxes and fees)

**FREE  
STATE  
INSPECTION**

(valid 30 days, does not  
include taxes and fees)

**10% OFF**  
any repair  
over \$100

(valid 30 days, does not  
include taxes and fees)

**WOMEN  
OWNED**

☎ 804-355-6666

✉ [CutshawAutomotive@yahoo.com](mailto:CutshawAutomotive@yahoo.com)

## **CAREFREE CAR CARE**

3101 W. Broad St. Richmond, VA 23230

# BECOME A MEMBER TODAY!



**YOU CAN JOIN ONLINE!**

Visit **MUSEUMDISTRICT.ORG** for more information.



**INSIDE THE MDA**

## MEET YOUR MDA ZONING & LAND USE COMMITTEE

by **KAREN HEADLEY**

*MDA Zoning & Land Use Committee Chair*

**T**he MDA Zoning & Land Use Committee reviews zoning and land use projects proposed within the Museum District and serves to support the mission of the MDA by working to ensure that the changes adhere to the [West of the Boulevard Design Overlay Guidelines](#) while ensuring “compatibility of new construction and structural alterations with the existing scale and character of surrounding properties” We strive to keep the community informed and educated about these changes while representing our neighborhood through thoughtful input to the city for projects in the district. These neighbors and volunteers spend multiple hours each month reviewing proposals and applications, meeting with applicants or their representatives, visiting the properties and gathering feedback from neighbors and MDA members. Our committee is also working to propose updates to the [West of the Boulevard Design Overlay Guidelines](#) and we will be looking for your input soon. **Q**

### Thank you to our 2023 committee members:

- Chair: Karen Headley
- Sharon Baxter
- Beth Bostian
- Caley Crawford
- Zoe Anne Green
- Tim Hayes
- Brian Mercer
- Daniel Mullery
- Haley O’Hara
- Justin Perry
- Jessie Reuben
- Andy Scudder
- Stephen Versen
- Sarah Weisiger

## The COLUMNS

A Publication of THE MUSEUM DISTRICT ASSOCIATION

### MAGAZINE COMMITTEE

- BEN HOPKINS . . . . . Content Editor
- ANDREW CRAWFORD . . . . . Sales
- SCOTT FIELDS . . . . . Graphic Designer
- LOUISE TURTON AND LAURIE LAVERY . . . . . Distribution Coordinators
- LIZ BRYANT . . . . . Writer
- MA POWERS . . . . . Writer
- ALLISON ELLIOTT SCHUTZER . . . . . Writer
- AMANDA SCUDDER . . . . . Writer

### QUARTERLY ADVERTISING RATES

- 1/8 Page (3.67” W x 2.4”H) . . . . . \$150
- 1/4 Page (3.67” W x 4.9” H) . . . . . \$250
- 1/2 Page (7.5” W x 4.9” H) . . . . . \$400
- Full Page . . . . . \$700
- 2-Page Spread . . . . . \$1250

We offer a 10% discount for advertisers who pay for one year in advance.

Contact our Advertising Manager at [MDANewsletterads@museumdistrict.org](mailto:MDANewsletterads@museumdistrict.org).




MUSEUM DISTRICT - RICHMOND VA



THE COLUMNS is printed on paper that contains 10% post-consumer waste.



Please pass your copy on to someone else!



# SPRUCELY

HOME & LIFESTYLE SOLUTIONS

**Professional organizing and concierge services that bring ease and order to life!**

---

Amanda Scudder, MSW, CPO-CD  
CERTIFIED PROFESSIONAL ORGANIZER  
[amanda@livingsprucely.com](mailto:amanda@livingsprucely.com)

---

**804-350-6636**  
[www.livingsprucely.com](http://www.livingsprucely.com)



Re-freshed. Re-newed. Re-built.



**905 N Sheppard Street Richmond**

Wednesday - Saturday 11-5, Friday til 6

**Mention this Ad for 10% Off**



**JANET BROWN**  
interiors

1124 N. Arthur Ashe Boulevard  
| 804-358-9548 | [Janetbrowndesign.com](http://Janetbrowndesign.com)

## We take a different path.

We founded Heartwood Wealth Advisors to break free from the traditional Wall Street model and build an independent practice focused on personalized service, collaboration with our clients, and transparency. With over 100 years of collective wealth management experience, Heartwood helps clients build, manage, preserve and transition wealth.

We look forward to working with you.

[www.heartwoodva.com](http://www.heartwoodva.com)



Your local Museum District Advisors...



**Wesley Kaufman, CFP®**  
804.269.8715  
[wkaufman@heartwoodva.com](mailto:wkaufman@heartwoodva.com)



**Ben Gurley, CFP®**  
804.269.8718  
[bgurley@heartwoodva.com](mailto:bgurley@heartwoodva.com)



# TRUCKLE CHEESEMONGERS: A TASTE OF EUROPE IN RVA



Owner Maggie Bradshaw pours a glass of wine from Truckle's well-curated collection.

by LIZ BRYANT

*"The vibe is good."*

**T**hat's how Maggie Bradshaw, owner of Truckle Cheesemongers, describes the Museum District. And it was one of the things that drew her to the neighborhood when she decided to expand her business.

Truckle opened in its first brick-and-mortar location in 2019 at Blue Bee Cider in Scott's Addition. But with only about 200 square feet, after a while, Bradshaw realized she needed more space.

"That was a really great stepping stone, because I wouldn't have been able to open this had I not done that."

The shop's new home at 714 N. Sheppard St. opened in November 2022. Occupying the entire building, there is now room for more display cases, a dine-in option and a larger retail space.

CONTINUED ON PAGE 9



**PATTI RYAN DESIGN**  
INTERIORS ♦ OBJECTS



Interior  
Design  
Services



Furnishings  
..... for .....  
the Home

3201 W. Franklin Street, Richmond, VA 23221  
patti@pattiryan.com | 804.210.3232  
[www.pattiryan.com](http://www.pattiryan.com)



**CARYTOWN**  
PACK & SHIP

**How can we help  
you PACK & SHIP?**



Monday – Friday  
10 – 6  
Saturday  
10 – 3

18 S Thompson St  
Ellwood Thompson Center

(804) 355-8805  
info@carytownps.com



Your local shipper since 1991



• ALL •  
**S A I N T S**

REFORMED PRESBYTERIAN CHURCH

We invite you to worship Jesus Christ and engage  
with the truth as it is revealed in the Bible

**SUNDAY MORNINGS AT 10:45**  
3000 Grove Avenue



## BUSINESS SPOTLIGHT

*continued from page 7*

Bradshaw's affinity for cheese goes back to her college days. While at Sewanee, she had the opportunity to study abroad in Paris, which exposed her to the world of European cheeses and, well, as they say, the rest is history. After graduation, she worked in trade associations in DC but always had a side gig as a cheesemonger. When her husband's graduate school studies took them to Chapel Hill, she decided to make cheesemongering her full-time focus.

But wait, let's back up a bit. What exactly is a cheesemonger?

"Monger just means someone who sells something," Bradshaw explained. "It's one of those nice 'old worldly' words that still applies."

And what about the name Truckle?

Bradshaw told us that truckle is a British term that describes a wheel of cheese taller than it is wide.

"When I was trying to think of a business name, I thought it was descriptive, but it's also cute."

When you visit Truckle, you can buy cheese as well as wine and beer on site or to go. The majority of cheeses offered at Truckle are European, though there are selections from Virginia farms. There are charcuterie boards (and for vegetarians there is yummy fig or pistachio "salami"), as well as grilled cheese sandwiches and other light fare. You can enjoy cheese flights with wine and beer pairings, or take a class to learn all about the history of cheese and how it's made (there's way more to it than you might imagine).

Bradshaw works with a staff of 12, all enthusiastic about all things cheese.



*Truckle's selection includes cheeses from Virginia and throughout Europe (no individually wrapped slices, though).*

"The neat thing about our group is that everyone is very different," she said, "but everyone loves cheese and works really well together."

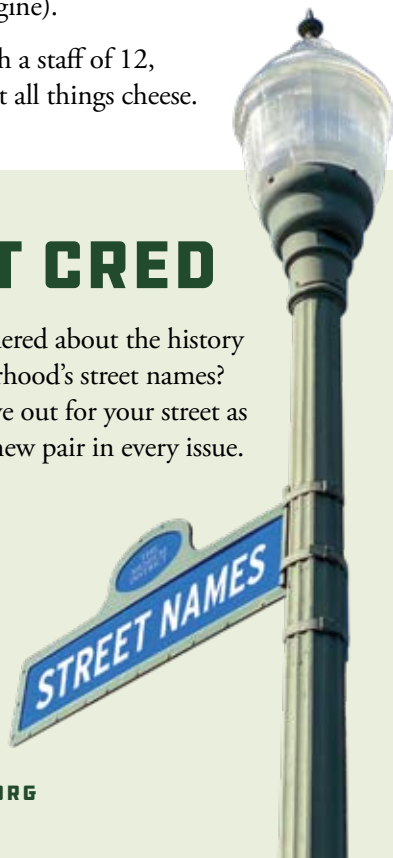
So, whether you pop in to grab some of your favorite Gouda or want to sit with a friend and enjoy a glass of wine in the evening, Truckle offers a friendly and inviting atmosphere.

And, the vibe is good.

For more information on hours and offerings, visit Truckle's website at [www.trucklerva.com](http://www.trucklerva.com). **E**

## STREET CRED

Have you ever wondered about the history behind our neighborhood's street names? We have! Keep an eye out for your street as we'll be featuring a new pair in every issue.



**STREET NAME: HANOVER AVENUE**

**DIRECTION:** East-West

**ORIGIN:** Named for Hanover County, which was named for the German prince who became George I of England.

**STREET NAME: KENSINGTON AVENUE**

**DIRECTION:** East-West

**ORIGIN:** Probably named from the plantation owned by William Byrd III. Kensington is a parish west of London and Kensington Palace. **E**

*Source: Facts and Legends of Richmond Area Streets by Thomas Mustian*  
Information is presumed factual but may be attributed to legend and lore.



**HOMEOWNERS VAN BASKINS AND MARC PURINTUN WERE DRAWN TO THE HOME'S DOUBLE LOT, WHICH ALLOWED THEM ROOM TO EXPAND AND PROVIDED AMPLE SPACE FOR A GARDEN.**

# GARDEN INSPIRATION FROM AN URBAN OASIS

by **AMANDA SCUDDER**

**B**ehind a stately 1917 brick foursquare poised at the intersection of Park and Roseneath is an urban oasis that appeals to every sense and sensibility.

## HISTORY

Homeowners Van Baskins and Marc Purintun were drawn to the home's double lot, which allowed them room to expand and provided ample space for a garden. The garden design was driven by the elevation of the house and alley, which are higher than the space between. To address this, architect Andrew Scudder of Johannas Design Group created a kitchen and porch addition that steps gently down to the lower tier of a two-tiered courtyard garden. He also designed a garage, which is accessed from the upper tier and connected to the porch with a columned breezeway. Here are some takeaways from this inspired arrangement.

## EVERGREENS AND HARDSCAPING PROVIDE YEAR-ROUND BEAUTY

Incorporating a variety of evergreens ensures there will always be plenty to admire. Underfoot, moss and sedum form chartreuse borders between pavers. Overhead, Black Dragon Cryptomeria, Tabletop Pine, Gold Thread Cyprus, Deodara Cedar and Weeping Blue Atlas soften the appearance of walls and hide unsightly utilities. While formidable to contain, amber-hued bamboo earns its keep by providing privacy and the ambiance of rustling leaves.

A limestone paved courtyard sized for entertaining is bordered by a rectangular reflecting pool that's beautiful to see, lovely to hear and long enough for two pool floats, with a convenient ledge for cocktails. Also of note are honey-toned Western Cedar gates topped by an arbor forged by local blacksmith Kyle Lucia of Phoenix Handcraft.



## VARIETY IS THE SPICE OF LIFE

When the garden is in what Van beautifully describes as “unfurling season,” many plants are just emerging. Early beauties include bright yellow Tete-a-tete Daffodils and crisp white Snowdrops and Candytuft. Euphorbia, which Van affectionately describes as a “Seussian garden harlot” with citrus-green blooms self-seeds profusely. Siberian Iris and Acanthus emerge later in the season. A Japanese Anemone from a friend and peonies and Solomon's Seal from Van's mother bless the homeowners with fond memories as well as flowers. Shade-loving Cinnamon Fern, Arborvitae Fern, Snowdrops, and Lily of the Valley grace a white moon garden while a New Dawn rose's blush-pink blooms and a climbing Hydrangea add vertical color and interest. Sorrel, with its tart, lemony leaf, is a great addition to gardens and salads. Herbs like thyme and mint make fragrant, delicious ground covers. A mint-management day strategically timed around the Kentucky Derby keeps rogue patches in check and provides the perfect excuse for race day Juleps.



## GARDENS HAVE MUCH TO TEACH US

Gardens are places of lifelong learning, and this urban oasis offers many lessons about unique microclimates, plant selection, and design that make up the artful science of gardening. **G**

# Come on in!



## MOTHER'S DAY *House & Garden* TOUR

*Spring has returned and with it, the Museum District's Annual Mother's Day House and Garden Tour is back for its 27th year!*

**A** much-anticipated event, the tour provides neighbors and visitors a glance inside some of the beautiful homes in our neighborhood. This year's tour features nine homes, each offering its own unique character and design.

The tour kicks off at 1:00 pm on Sunday, May 14! Visitors can find will-call for online ticket purchases, or purchase tickets day of, at the Virginia Museum of History and Culture. The VMHC will also offer parking and public restrooms. Trolley service will be available from 1:00 – 6:00 pm and will make stops throughout the neighborhood near the featured homes and at the VMHC. An additional restroom stop will be available at the Belmont Library.

We are so excited to see you on Sunday, May 14, to enjoy our neighborhood tradition!

For more information on tickets and featured homes, please visit [www.museumdistrict.org](http://www.museumdistrict.org). 

*House photos by* **RICH BARRETT**



## Cynthia Coldwell

### 3117 MONUMENT AVENUE

Designed by architect Carl Max Lindner, Sr. in 1927, this “cottage” (one of nine on the block!) fulfilled Lindner’s intention to create diverse housing options on the grand street that also blended apartment buildings, multi-family dwellings and large single-family homes.

Cynthia Coldwell’s lifelong interest in antiques, decor and travel is apparent throughout— art and treasures from her excursions combine with the home’s original features, which include leaded-glass windows, timbered ceilings and original balustrade with lantern finials. Baths were completely renovated in marble consistent with the home and, during the renovation process, an original stained-glass window was uncovered. While innumerable aspects of the home have been upgraded, the footprint remains true to the architect’s design with the sole addition of an intimate sitting room beyond the kitchen.





## Bob Gorrell and Sabet Stroman

### 3301 MONUMENT AVENUE

This beautiful Colonial Revival home, designed by Otis Asbury and built in 1921 by Mrs. Ora E. Garner, passed through several owners until falling into disrepair in the '80s. In 1998, designer Rich Barnett, owner of Maison Interior Design, bought the home and salvaged the original doors, mantel, woodwork and windows. Known for his faux-painting techniques, he took great care to paint and add texture to the walls. During his renovations, he combined two upstairs bedrooms, creating a master suite running the length of the house. Walls were also opened in the kitchen, which current owners Bob and Sabet contributed to with updated cabinetry when they took residence in 2021. The kitchen stands as an elegant gathering and preparation space and the home is embellished with artwork made by local artists from the many places Sabet and Bob have lived and visited.



**MOTHER'S DAY**  
*House & Garden*  
**TOUR**



## *Dave and Pat Caulkins*

### **2902 ELLWOOD AVENUE**

The Caulkins' Victorian Queen Anne and Italianate home invites a glimpse into the architectural beauty of the past. Designed by D. Wiley Anderson and built in 1895, it is one of two homes on the street that are mirror images of each other. The homes were thought to have been part of the Confederate Camp, but later considered to have been erected to create a "Gate House" effect to the West End Development. When Dave and Pat purchased the home in 2013, it was in dilapidated condition and required two years of intense renovation. The City of Richmond, the West of the Boulevard Historical District, the Department of Historical Resources and Historic interior designer Jean Dunbar all played a role. The Caulkins' passion for historical renovation and sweat equity are evident in every detail, including the palate of paint colors, wallpaper patterns and tile - all authentic to the period- as well as the Victorian-inspired window treatments by friend and designer William Walker of Barley Twist.





## Cliff Barcliff and Melanie Nan

### 3330 HANOVER AVENUE

Art and design are stalwart guides in the evolution of this epic home renovation. Cliff and Melanie purchased this 1924 Colonial Revival house in 2010 with the original footprint fully intact. Original stained-glass windows flank the first floor sitting room that now expands the original galley kitchen into a cooking and entertainment palace. Here the true renovation begins. A 950 sq ft addition melds the interior of the home with the outdoors—the vision of the present owners and their designer Cheri Wolff and created by architect Christian Snowden. The addition is bathed in light by floor-to-ceiling windows and the mid-century modern theme of the home continues with authentic period furnishings and beautifully designed lighting fixtures. Outside, a walkway of Cumaru (Brazilian Teak) leads to a large outdoor deck area, while upstairs a rooftop deck offers beautiful views of the Museum District and amazing sunsets here in RVA.





MOTHER'S DAY  
House & Garden  
**TOUR**



## Cyndi and Greg Schulte

**517 N. BELMONT AVENUE**

A complete renovation in 2019 awaits you at 517 N. Belmont. According to renters Cyndi and Greg Schulte, the house was purchased in total disrepair and taken down to the studs. Only the original pine floors upstairs and the mantle remain from the original house. Tray ceilings and a working wood-burning fireplace accent the front living room and the main level continues into an open floor plan that makes a wonderful space for entertaining. Additions to the back of the house create a family room and a wine bar on the main level, while upstairs the addition made way for a master bedroom and bathroom. Below ground, the basement is fully renovated to include a full bathroom and ample closet space.

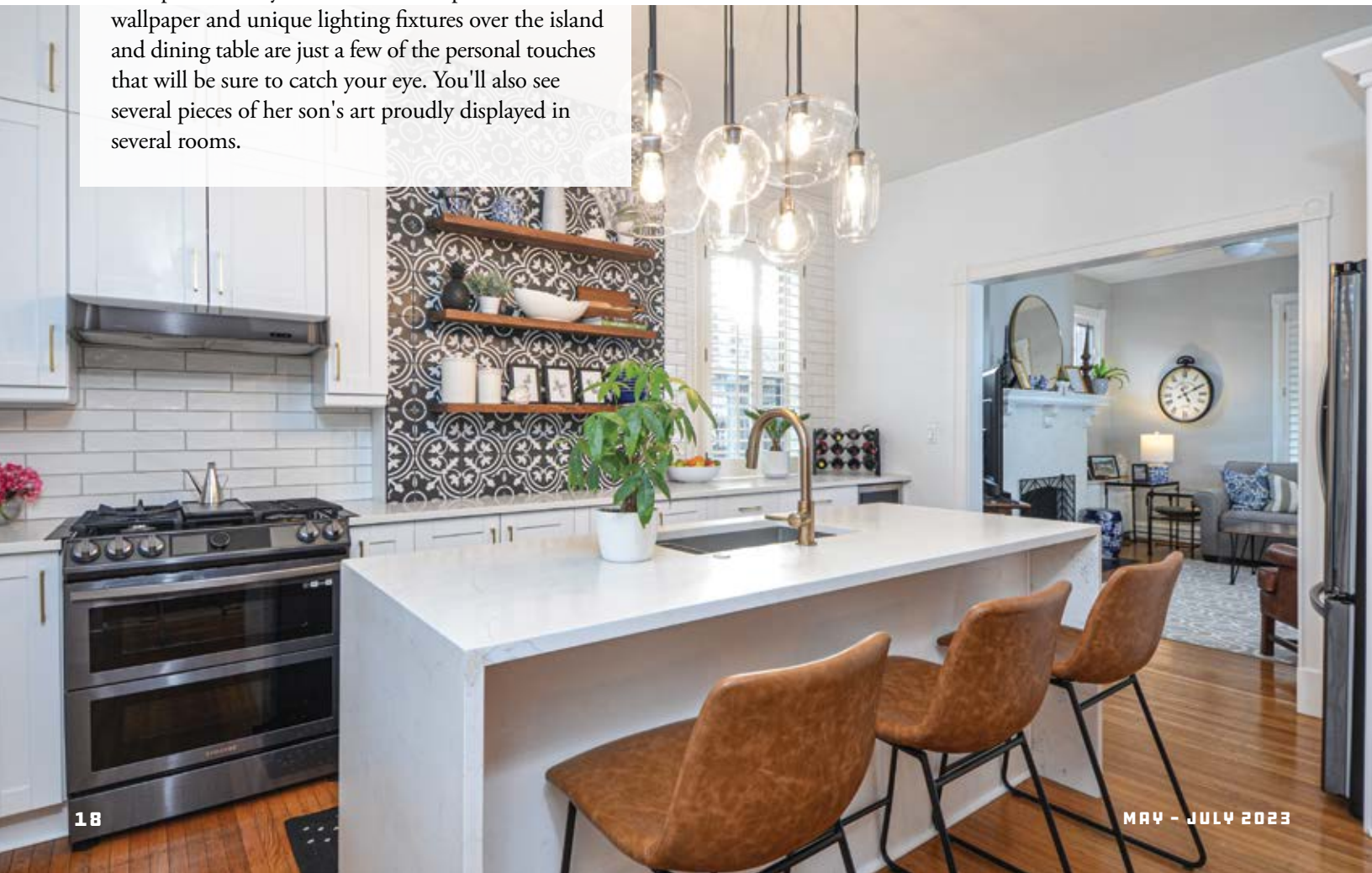




## Denise Miller

### 511 N. BELMONT AVENUE

Enter this 1916 traditional Colonial through the newly added front porch and you'll find original molding, doors and mantel. The once wood-burning fireplace was recently converted to gas by owner Denise Miller, whose other updates since purchasing this home in 2021 include renovating and retiling the kitchen, where guests love to gather, and the back patio and newly planted yard, where she enjoys spending time in the warmer months. Inside, sunlight bounces off the neutral walls of the open floor plan. A cozy window seat, fun powder room wallpaper and unique lighting fixtures over the island and dining table are just a few of the personal touches that will be sure to catch your eye. You'll also see several pieces of her son's art proudly displayed in several rooms.





MOTHER'S DAY  
House & Garden  
**TOUR**

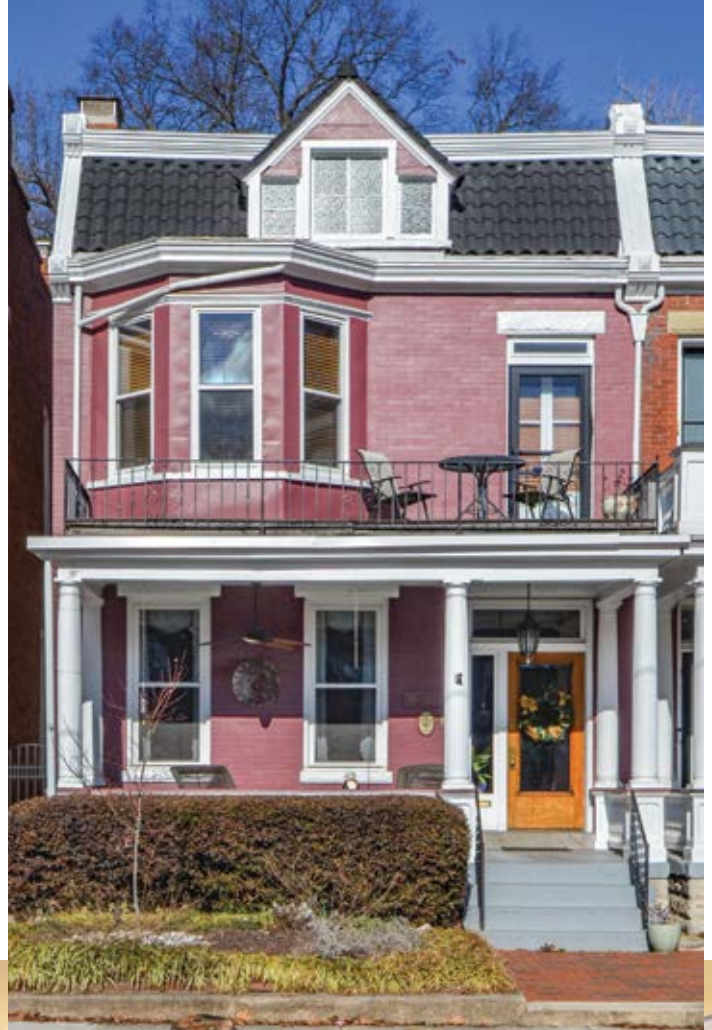


*Kelsea Burton and  
Nick Marfing*

**3424 HANOVER AVENUE**

In this traditional-meets-modern home, Kelsea Burton and Nick Marfing's "minimalist eclectic" style is evident. Their vision was to open the space and maximize the floor plan, which they accomplished by removing all the walls on the first floor and replacing them with painted steel beams. The beams even support a swing in the kitchen! Mural artist and graphic designer Kelsea contributed to the fresh, modern look by adding her own work of art to the length of one wall. Upstairs, the bathroom got a complete redo with a large round tub and open shower design. The most recent project is the basement, which, once complete, will have a TV room, gym, new bathroom, tool room and closet space.





## Hortense Mitchell Liberti

### 3202 GROVE AVENUE

When Hortense Mitchell Liberti and her husband moved into this house in 1987 it was, as she politely described, a “fixer-upper”. Infestations and ancient appliances were among the many challenges the couple had to contend with, but they embraced the enormous renovation economically, with her husband doing many of the upgrades himself. These include the addition of handmade bricks, seen from the entrance to the kitchen, and turning the first floor washroom into a full bathroom with a walk-in shower. Her husband and son also built the back deck. More recently, solar panels and upgraded electrical and irrigation systems have modernized this home. Hortense describes herself as an “eclectic collector of items” who prefers “lots of color,” which is obvious as there is not a single white wall in this home.





MOTHER'S DAY  
House & Garden  
**TOUR**



## *Jim and Kathleen Bush*

**420 N. SHEPPARD AVENUE**

One of three charming brick Arts and Crafts-style homes built next to each other in 1922, 420 N. Sheppard has only had two other owners before Jim and Kathleen Bush purchased it in 2012. While they have updated the kitchen floor and counters, it was the second owner, Dr. Fay Redwine, who enhanced the home with custom furnishings and finishes by local artists and craftspeople, including an impressive mahogany front door crafted by Haley Pearsall with a leaded glass insert by Wayne Cain. The dining room is adorned with original French doors and an atrium constructed in 1985. The efficient custom kitchen, with laminated birch cabinets and commercial-grade appliances, opens to the added solarium. Floor-to-ceiling windows and skylights flood the space with light and provide unobstructed views of the landscaped courtyard and carriage house in the back. **E**





**SUN + PATIO + BEER**  
**ARDENT CRAFT ALES** IN HISTORIC *Scott's Addition* RICHMOND, VA  
**KID FRIENDLY / DOG FRIENDLY / BEER FRIENDLY**  
 ARDENT CRAFT ALES / 3200 W LEIGH ST RICHMOND, VA  
 @ARDENTCRAFTALES / WWW.ARDENTCRAFTALES.COM

## The community of St. Mark's Episcopal Church

individuals and families of all kinds  
has long been committed to inclusion,  
warmly welcoming all persons.



We invite You to Visit  
Sundays at 10:30am  
In-person and On-line  
520 N. Arthur Ashe Boulevard - 358.4771  
[www.stmarksrva.org](http://www.stmarksrva.org)



## LOCAL GOVERNMENT INFORMATION

### CITY

Mayor Levar Stoney ..... 804-646-7970  
 Citizens Assistance ..... 804-646-7000 or 311  
 Public Works (*Leaf and trash collection, sidewalks and tree maintenance, etc.*) . . . 804-646-6430  
 Building Permits, Inspections ..... 804-646-4169  
 Property Maintenance/Code Enforcement ..... 804-646-6398

### POLICE & FIRE

Emergency ..... 911  
 Fire Non-emergency ..... 804-646-6640  
 Police Non-emergency ..... 804-646-5100  
 Crime Stoppers ..... 804-646-6733  
 3rd Precinct ..... 804-646-1412  
 Animal Control ..... 804-646-5573  
 ..... (after hours) 804-646-5123

### RVA311

RVA311 is the City of Richmond's centralized format for easily reporting, filing and tracking all resident service requests.

RVA311 is a full-scale online and mobile app solution that allows residents to record service requests directly to various government entities, including the Richmond Police Department, the departments of Public Works, Public Utilities, Social Services and Finance, and the Department of Planning and Development. Requests for service cover everything from pothole reports, broken streetlights and damaged infrastructure to unlawful dumping, sanitation concerns, graffiti, abandoned vehicles and much more. The system is very user-friendly, and even includes a FAQ section to help with general questions about taxes, parking and other city-related functions.

To get started, residents can go to [www.rva311.com](http://www.rva311.com) and set up an account for reporting. Once issues or complaints are filed, they can be tracked from inception to assignment and ultimately through to conclusion.

### CITY COUNCIL

Andreas Addison (1st District) - [andreas.addison@richmondgov.com](mailto:andreas.addison@richmondgov.com) ..... 804-646-5935  
 Katherine Jordan (2nd District) - [katherinejordan@richmondgov.com](mailto:katherinejordan@richmondgov.com) ..... 804-646-6532  
 Stephanie Lynch (5th District) - [stephanie.lynch@richmondgov.com](mailto:stephanie.lynch@richmondgov.com) ..... 804-646-5724  
 For information on City Council meetings, visit <https://richmondva.legistar.com/Calendar.aspx>.

### SCHOOL BOARD

Jason Kamras, School Superintendent - [jkamras@rvaschools.net](mailto:jkamras@rvaschools.net) ..... 804-780-7700  
 Elizabeth Doerr (1st District) - [edoerr@rvaschools.net](mailto:edoerr@rvaschools.net) ..... 804-929-6624  
 Mariah White (2nd District) - [mwhite4@rvaschools.net](mailto:mwhite4@rvaschools.net) ..... 804-221-9389  
 Stephanie Rizzi (5th District) - [srizzi@rvaschools.net](mailto:srizzi@rvaschools.net) ..... 804-929-6930

To watch school board proceedings and meetings:

Go to: <https://goboarddocs.com/vsba/richmond/board.nsf/public>

### VIRGINIA GENERAL ASSEMBLY

Del. Dawn Adams (68th) - [DelDAdams@house.virginia.gov](mailto:DelDAdams@house.virginia.gov) ..... 804-698-1068  
 Del. Betsy Carr (69th) - [DelBCarr@house.virginia.gov](mailto:DelBCarr@house.virginia.gov) ..... 804-698-1069  
 Del. Jeffrey Bourne (71st) - [DelJBourne@house.virginia.gov](mailto:DelJBourne@house.virginia.gov) ..... 804-698-1071  
 Sen. Ghazala Hashmi (10th) - [district10@senate.virginia.gov](mailto:district10@senate.virginia.gov) ..... 804-698-7510

### US CONGRESS (DISTRICT 4)

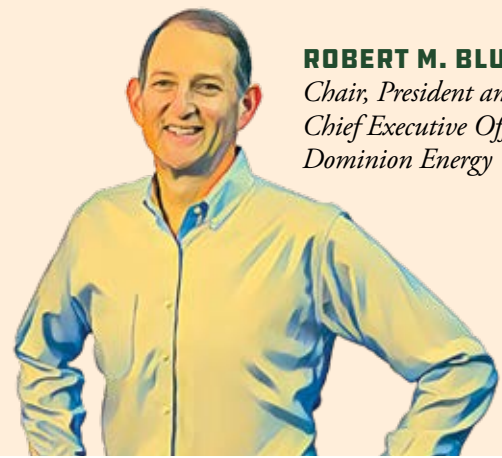
Rep. Jennifer L. McClellan ..... DC Office - 202-225-6365  
 Richmond Office - 804-486-1840

### US SENATE

Sen. Mark Warner ..... DC Office - 202-224-2023  
 Richmond Office - 804-775-2314  
 Sen. Tim Kaine ..... DC Office - 202-224-4024  
 Richmond Office - 804-771-2221

# THE PROUST QUESTIONNAIRE

Adapted by editor Ben Hopkins, the Proust Questionnaire is a series of questions about personality that became popular in the late nineteenth century. While French author Marcel Proust did not write the questions, his answers (and the questions) were published in 1890. Modified versions of the questionnaire have been used over the years by James Lipton as part of his show "Inside the Actor's Studio" and Vanity Fair magazine, which features the answers of celebrities in the back pages of each issue.



**ROBERT M. BLUE**  
Chair, President and  
Chief Executive Officer  
Dominion Energy

## WHAT IS YOUR IDEA OF PERFECT HAPPINESS?

Spending time with my family outdoors, probably on a whitewater rafting/kayaking trip.

## WHAT IS YOUR GREATEST FEAR?

Aside from an irrational fear of snakes, I don't have many fears.

## WHICH LIVING PERSON DO YOU MOST ADMIRE?

My wife, Liz. She makes hard things look easy and focuses all of her energy on others, not herself.

## WHAT IS YOUR GREATEST EXTRAVAGANCE?

I am a lifelong UVA men's basketball fan. When the team won the national championship in 2019, I bought enough tickets on StubHub for our family that I was invited to the StubHub Final Four party!

## WHAT IS YOUR GREATEST REGRET?

I tend to look forward, not back. So I can't identify a "greatest regret."


## WHAT OR WHO IS THE LOVE OF YOUR LIFE?

Liz - see above. We've been happily married (or at least I have!) for more than 28 years, and we have three wonderful children. They also happen to be the loves of my life.

## WHICH TALENT WOULD YOU MOST LIKE TO HAVE?

I wish I could dunk a basketball.

## WHAT IS YOUR CURRENT STATE OF MIND?

Optimistic. 

## WHAT DO YOU CONSIDER YOUR GREATEST ACHIEVEMENT?

I don't think about personal achievements. No one succeeds without help from many others.

## IF YOU WERE TO DIE AND COME BACK AS A PERSON OR A THING, WHAT WOULD IT BE?

I might enjoy being an otter given my love of rivers.

## WHAT'S YOUR MOST TREASURED POSSESSION?

I don't have a treasured possession. But I do treasure time spent outdoors.

## WHAT DO YOU REGARD AS THE LOWEST DEPTH OF MISERY?

Loneliness.

## WHAT IS IT THAT YOU MOST DISLIKE?

I tell people at work that I have a "no jerks" policy, so I suppose I most dislike when people act like jerks.


## HOW WOULD YOU LIKE TO DIE?

I'm not even willing to think about this one!

## WHAT IS YOUR MOTTO?

See above regarding "no jerks."

## WHAT'S THE MOST RICHMOND THING YOU CAN DO?

A trip on the river from Pony Pasture through downtown. No other city has whitewater like Richmond. 



**Summer Celebration**  
**MAY 31**

**5-7 PM | FOOD, MUSIC, GAMES**  
**DONATION \$5 | BRING LAWN CHAIRS**



Richmond's First Baptist Church | 2709 Monument Ave., Richmond, VA 23220  
fbrichmond.org | 804-355-8637



***SOLD!***

with Chris Small.

To get your home **SOLD**,  
contact Broker and  
Luxury Estate Agent, Chris Small.

804-350-0879 |  
[chris.findahomerichmond.com](http://chris.findahomerichmond.com)



3103 Ellwood Avenue, Richmond, VA 23221

